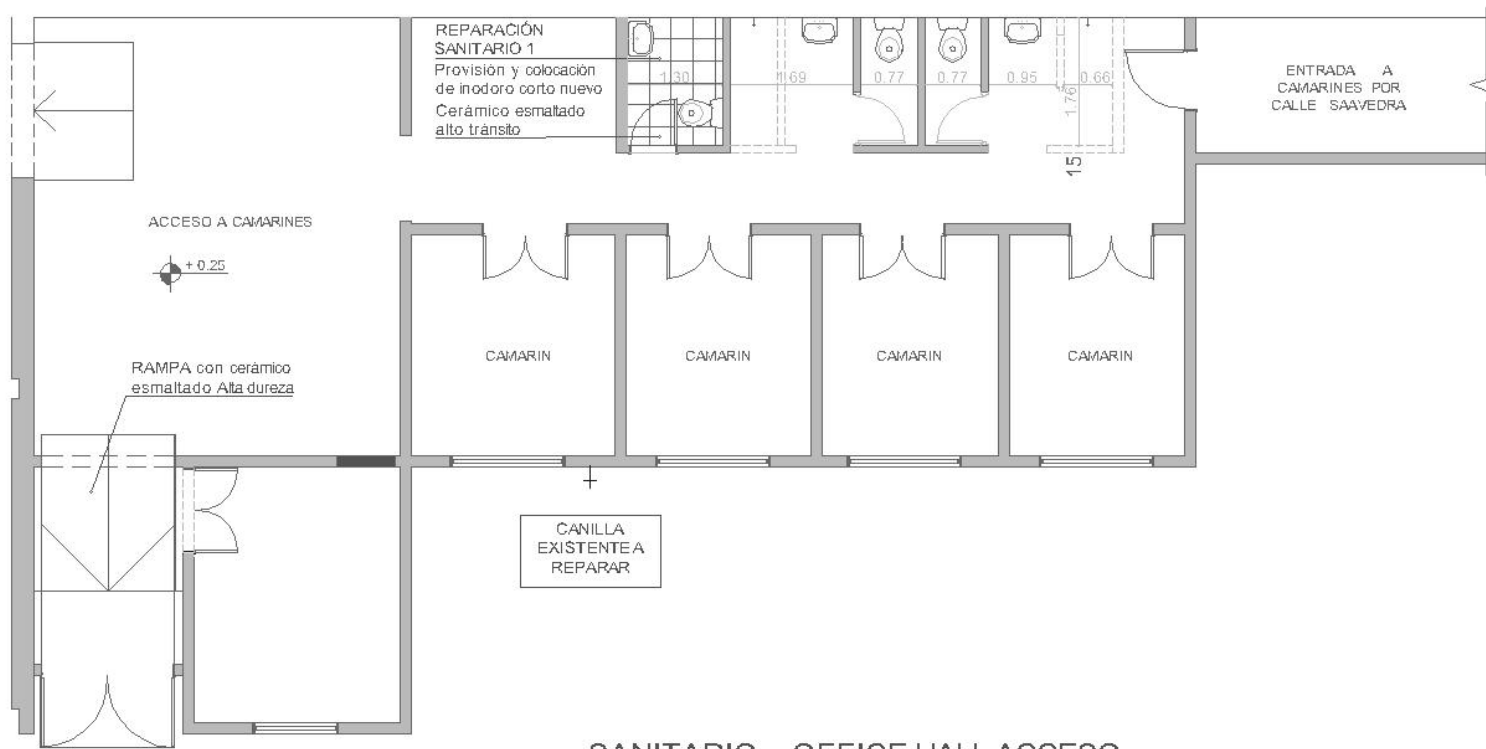
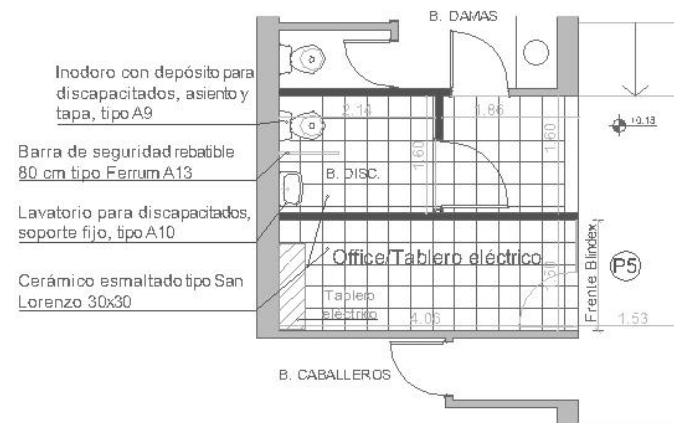
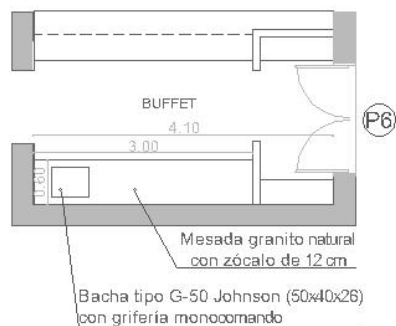


SANITARIOS SECTOR CAMARINES



SANITARIO y OFFICE HALL ACCESO

SECTOR BUFFET



OBRA: PUESTA EN VALOR TEATRO RANCHERÍA

PLANO: SECTOR SANIT. CAMARINES/ BUFFET/ SANIT. PÚBLICO

EMPRESA CONSTRUCTORA:

ESCALA:

PLANO N°: 4.2